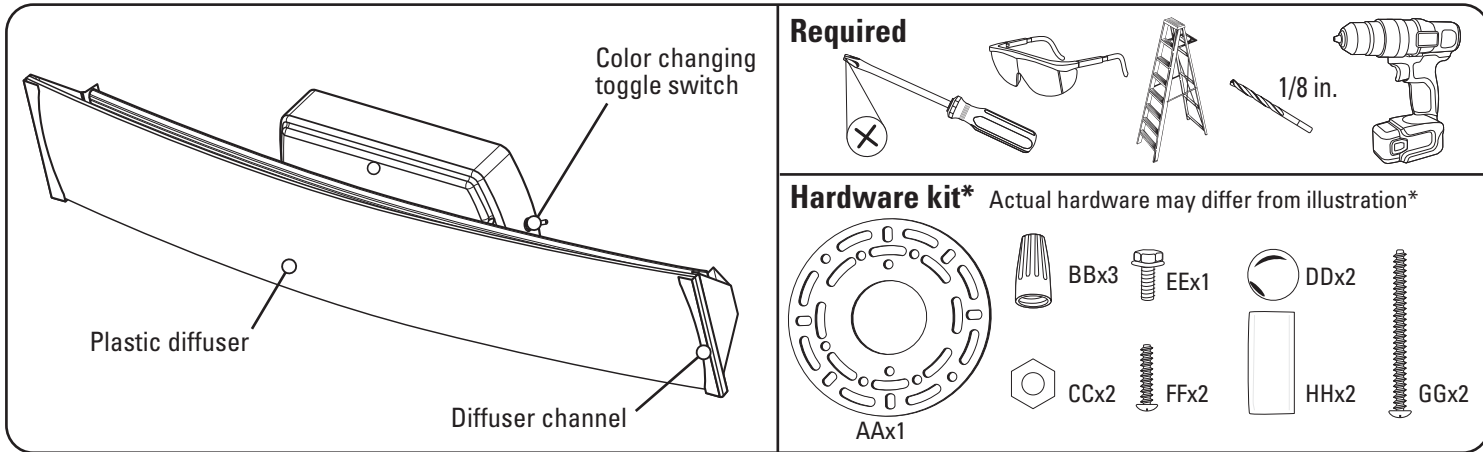


Patriot

LIGHTING®

24 in. Seattle LED Linear Vanity
Model #: VA1126-NK3-24LFC-T



Need Help?

Questions? Call our Customer Service Center 1-800-291-8838.



WARNINGS AND CAUTIONS

⚠️ TURN POWER OFF AT BREAKER BOX/FUSE BOX. TURN WALL SWITCH TO JUNCTION BOX OFF

Shut off power at the circuit breaker or fuse panel before removing the old fixture or installing a new one.

Read entire installation procedure before you begin and save instructions for future reference.

THIS FIXTURE IS DIMMABLE BY SPECIFIC FORWARD PHASE ELECTRONIC (TRIAC) DIMMERS. Dimmers tested to be compatible with this fixture are the Lutron Skylark® SCL-153P*, Diva® DVCL-153P*, Maestro® MACL-153M*, Toggler® TGCL-153P*, Lumea® LECL-153P*, Caseta® PD-6WCL*, Eaton Halo® SAL06P*. (This list of dimmers does not imply any guarantee or warranty of compatibility with a particular application. Dimmers not listed do not imply non-compatibility.)

If unsure if the electrical box is properly grounded, or the box is plastic and has no ground wire, or are unfamiliar with the methods of properly grounding fixture, consult a qualified electrician.

IMPORTANT SAFETY INFORMATION

1. **TURN POWER OFF BEFORE SERVICING.**
2. Do not look directly at LEDs for any extended period of time.
3. Suitable for **INDOOR** damp locations.
4. Do not leave bare wires exposed.
5. For electrical requirements, see fixture. Minimum 90 °C supply conductors.

CARE AND MAINTENANCE

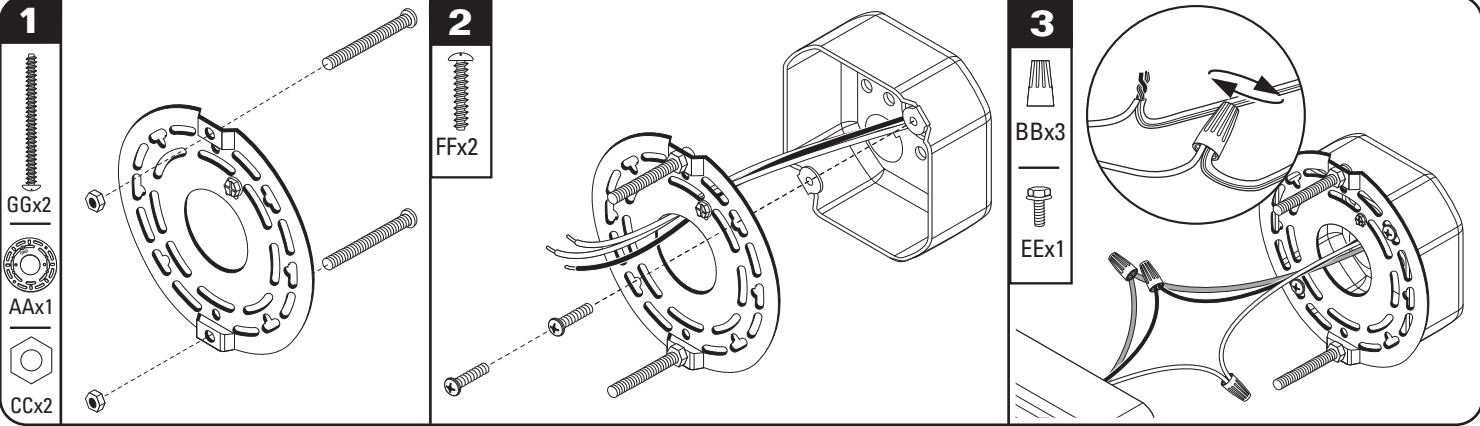
Periodically clean the fixture and diffuser using a mild, non-abrasive cleaner and soft cloth. When cleaning the fixture, make sure the power is turned off. Do not spray cleaner directly onto any part of the fixture or LEDs.

FCC Statement:

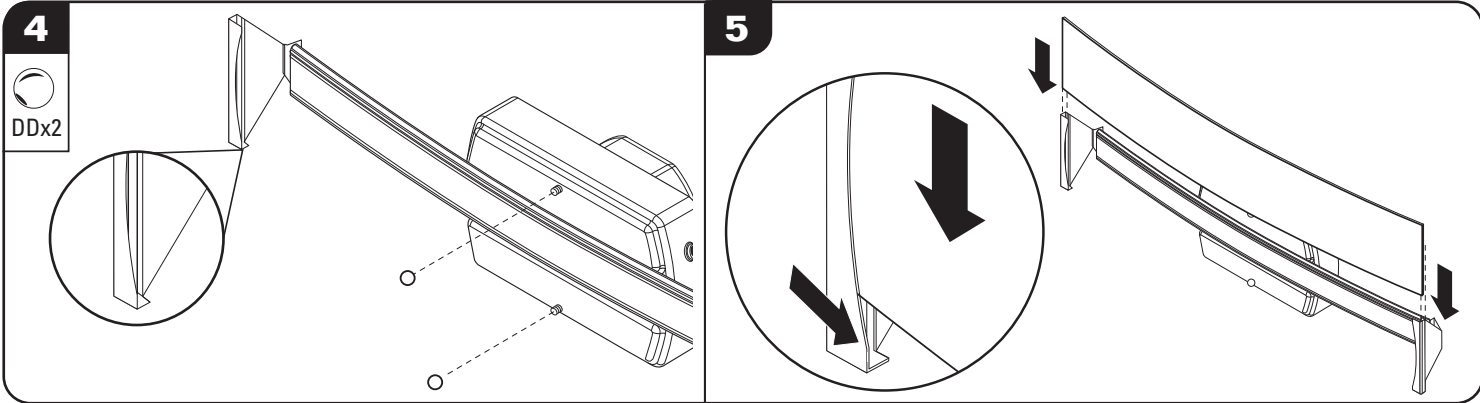
This device complies with Part 15 of the FCC rules. Operation is subject to the following two conditions: (1) This device may not cause harmful interference, and (2) this device must accept any interference received, including interference that may cause undesired operation. Warning: Changes or modifications to this unit not expressly approved by the party responsible for compliance could void the user's authority to operate the equipment. **Note:** This equipment has been tested and found to comply with the limits for a Class B digital device, pursuant to Part 15 of the FCC rules. These limits are designed to provide reasonable protection against harmful interference in a residential installation. This equipment generates, uses and can radiate radio frequency energy and, if not installed and used in accordance with the instructions, may cause harmful interference to radio communications. However, there is no guarantee that the interference will not occur in a particular installation. If this equipment does cause harmful interference to radio or television reception, which can be determined by turning the equipment off and on, the user is encouraged to try to correct the interference by one or more of the following measures: 1) Reorient or relocate the receiving antenna. 2) Increase the separation between the equipment and receiver. 3) Connect the equipment into an outlet on a circuit different from that of the receiver. 4) Consult the dealer or an experienced radio/TV technician for help.

Patriot Lighting® Warranty

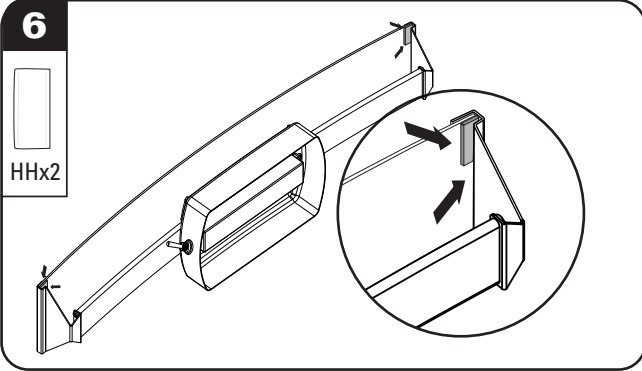
FIVE-YEAR LIMITED WARRANTY: If, during normal use, this PATRIOT LIGHTING® lighting fixture breaks or fails due to a defect in material and workmanship within five (5) years from the date of original purchase, simply bring this lighting fixture with the original sales receipt back to your nearest MENARDS® retail store. At its discretion, PATRIOT LIGHTING® agrees to have the product or any defective part(s) repaired or replaced with the same or similar PATRIOT LIGHTING® product or part free of charge, within the stated warranty period, when returned by the original purchaser with the original sales receipt. This warranty; (1) excludes expendable parts including but not limited to light bulbs; (2) does not cover damage that has resulted from abuse or misuse; and (3) does not cover any losses, labor, injuries to persons/property or costs. This warranty does give you specific legal rights and you may have other rights, which vary from state to state.



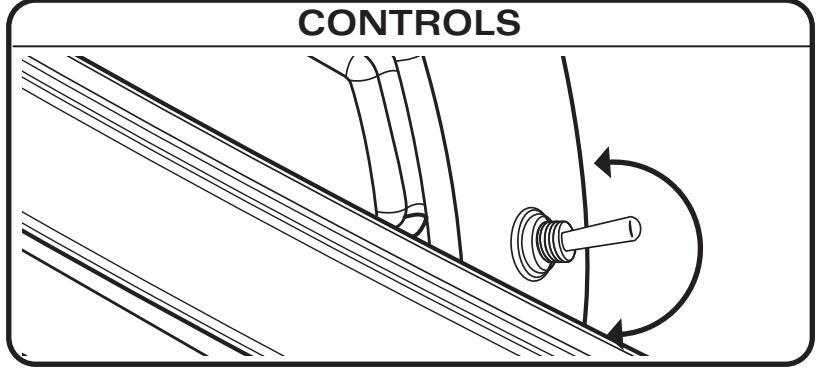
- 1 Screw the two long machine screws (**GG**) through the threaded holes from the backside of the mounting bracket (**AA**). On the front side of the mounting bracket (**AA**), secure the hex nuts (**CC**) onto the screws until they are flush with the mounting bracket (**AA**).
- 2 Hold the mounting bracket (**AA**) up to the electrical box and pull the wires through the center opening of the mounting bracket (**AA**). Use the short machine screws (**FF**) to attach the mounting bracket (**AA**) flush to the electrical box. **NOTE:** If necessary, the elongated slots in the mounting bracket may be utilized to achieve the correct orientation for the installation.
- 3 Fixture must be properly grounded. Connect fixture ground wire to ground wire in electrical box using a wire nut (**BB**). The ground wires can be either green or bare copper. If the electrical box is metal and grounded, attach the green/copper ground wire from the fixture to the mounting plate using the grounding screw (**EE**). Then connect black supply lead to black fixture wire and white supply lead to white fixture wire using wire nuts (**BB**). Secure the wire nuts properly to prevent the wires from coming loose. Push excess wire back into the electrical box.



- 4 Before mounting fixture, make sure the closed catches of the diffuser channel are on the bottom to prevent the diffuser from falling out. Secure the fixture to the electrical box with the screw caps (**DD**). The back plate should be tight against the wall surface.
- 5 Simultaneously, slide both ends of the diffuser evenly into the channels at each end. **NOTE:** The plastic diffuser, when properly installed, is meant to have an arc spaced away from but aligned with the LED board. If the diffuser does not line up with the LED board, carefully bend the ends in or out slightly in order to align. Once both ends of the diffuser are set in the openings of the end caps, carefully push/pull the diffuser into place until it is securely seated in the closed catches.



- 6 In order to hold the diffuser in place, insert the silicone pads (**HH**) between the diffuser and the end cap channel at each end. Restore power to the fixture.



COLOR CHANGING TOGGLE SWITCH
 Toggle switch allows the color temperature of the light to be adjusted between 3 values:
 Warm White: 2700°K,
 Bright White: 3300°K
 Cool White: 4000°K

Troubleshooting Guide		
Problem	Cause	Solution
Fixture doesn't light.	Power is off. Bad connection. Bad switch.	Check if power supply is on. Check cords and/or wiring. Test or replace switch.
Fuse blows or circuit breaker trips when light is turned on.	Discontinue use.	Call customer service. (1-800-291-8838).

Replacement Parts List

Hardware Kit: ZH-VA1126D24-NK3	Replacement Diffuser: ZD-VA1126D24-FWA
-----------------------------------	---

SAVE THESE INSTRUCTIONS.