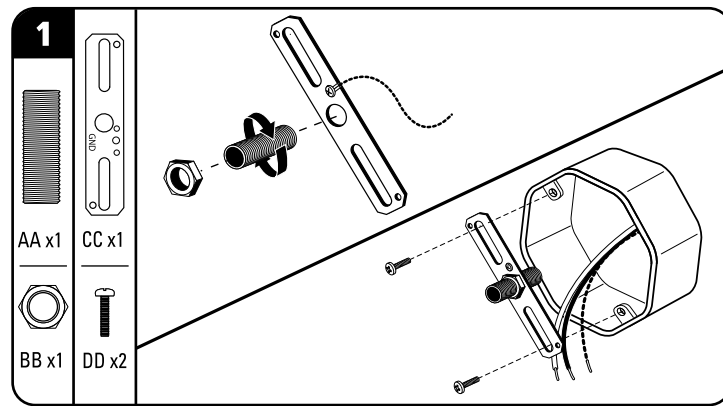
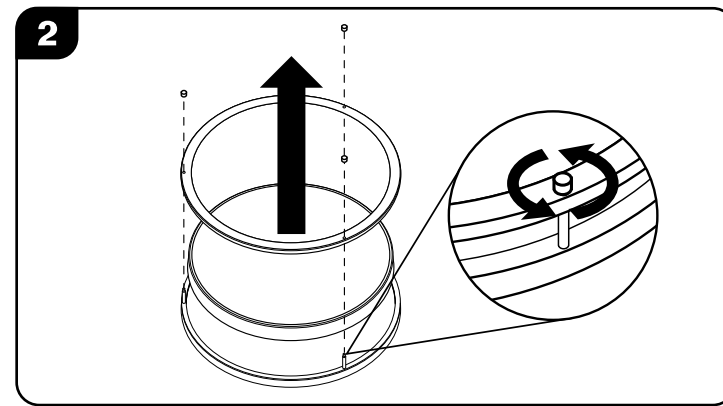


Patriot LIGHTING®

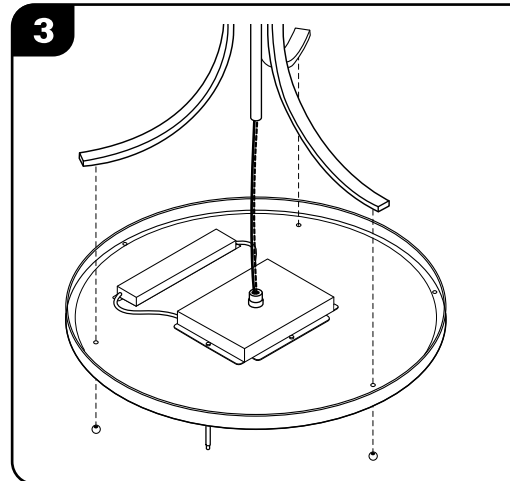
Tanner 17" LED Pendant
Model #: PL1125-NK7-17LF0-T



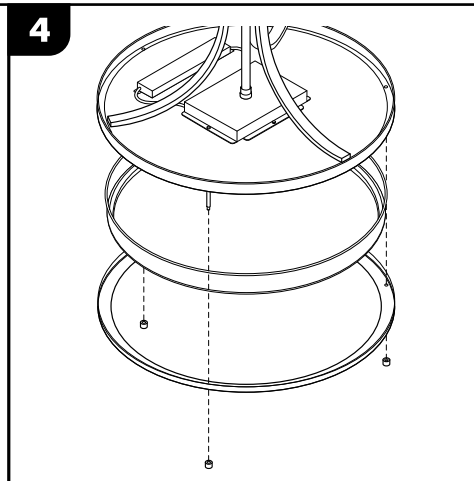
1 Attach threaded tube (AA) to threaded hole in mounting bracket (CC). Lock in place using hex nut (BB). Threaded tube should extend about an inch beyond wall line. Attach mounting bracket to electrical box using mounting screws (DD) or existing electrical box screws.



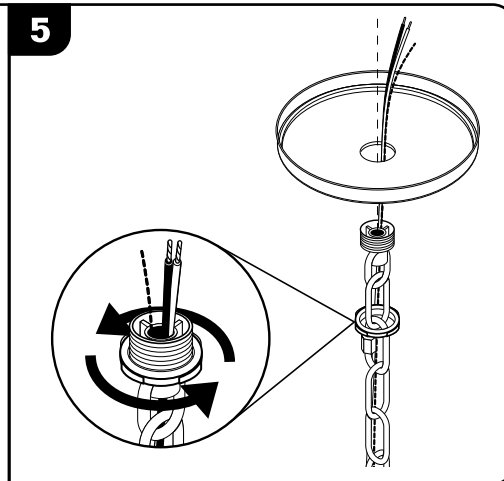
2 Remove diffuser and decorative ring secured to fixture pan by unscrewing cylindrical post caps.



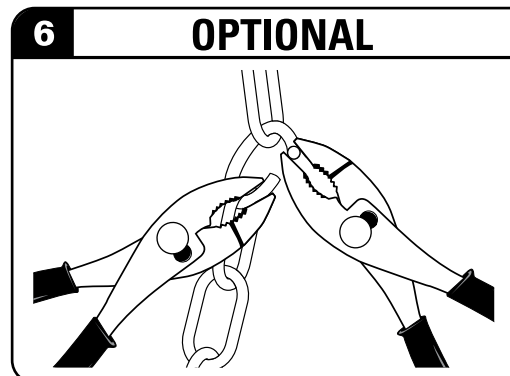
3 Attach legs to fixture pan by aligning with the holes. Secure legs to fixture by using the spherical post caps.



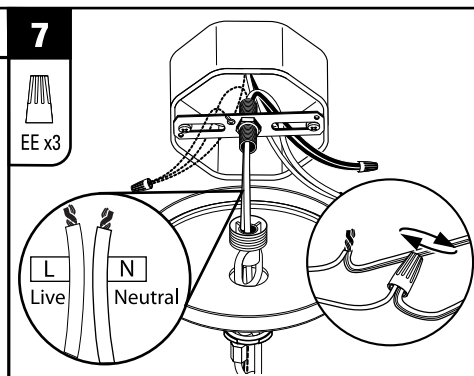
4 Place diffuser and decorative ring against fixture pan. Once holes are aligned, hold both diffuser and ring in place and attach cylindrical post caps to secure decorative ring.



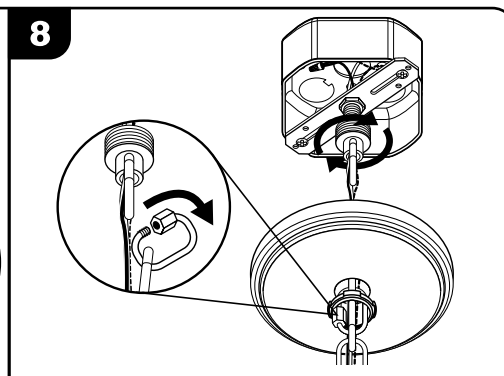
5 Remove collar lock ring from collar mounting stem. Insert collar mounting stem and wires into the canopy cap hole.



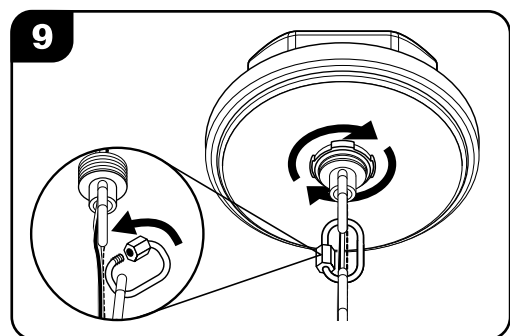
6 **OPTIONAL:** Using pliers, attach one end of the chain to the quick link. Adjust the chain to the desired length by removing as many chain links from the top of the chain as necessary.



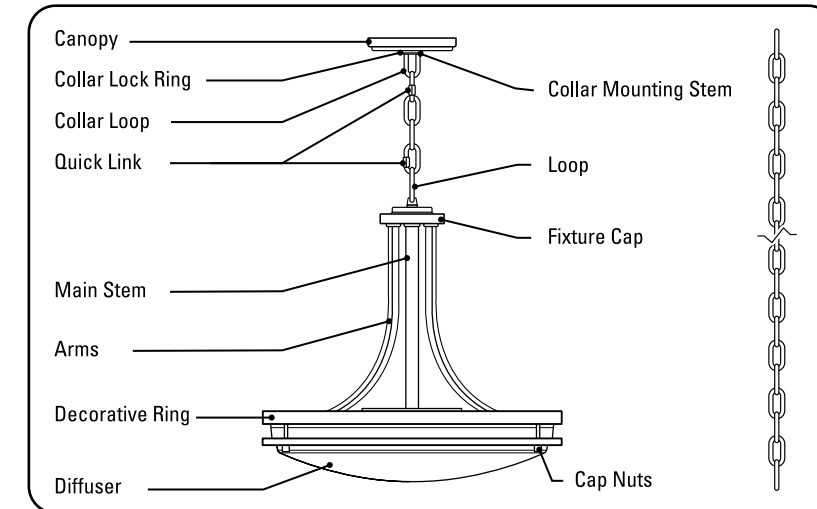
7 Insert wires through the threaded tube attached to the mounting bracket. Fixture must be properly grounded. Connect fixture ground wire to ground wire in electrical box and mounting plate using a wire nut (EE). Ground wires can be either green or bare copper. Connect black supply lead to clear fixture wire (L) and white supply lead to clear fixture wire (N) using wire nuts (EE). Secure the wire nuts properly to prevent the wires from coming loose. Push excess wire back into the electrical box.



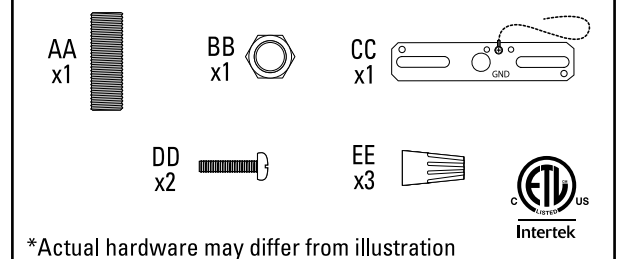
8 Loosen, open and remove quick link from the collar mounting stem. Attach the collar mounting stem of the fixture to the threaded tube of the mounting bracket.



9 Re-attach quick link to the collar mounting stem of the fixture. Raise canopy until collar mounting stem passes through its center and secure by tightening the collar lock ring. Restore power to the fixture.

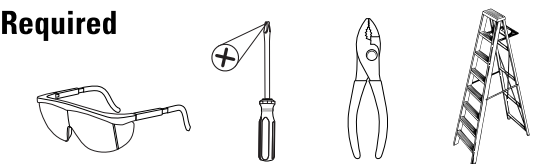


Hardware kit*



*Actual hardware may differ from illustration

Required



Need Help?
Questions? Call our Customer Service Center 1-800-291-8838.
www.goodearthlighting.com

Warnings and Cautions

Shut off power at the circuit breaker or fuse panel before removing the old fixture or installing a new one. Read entire installation procedure before you begin and save instruction for future reference.

THIS FIXTURE IS DIMMABLE BY SPECIFIC FORWARD PHASE ELECTRONIC (TRAIC) DIMMERS. Dimmers tested to be compatible with this fixture are the Lutron® Diva® C*L™: DVWCL-153P* or DVCL-153P*, Lumea® C*L™: LGCL-153P*, and Toggler® C*L™: TGCL-153P*. Not recommended for use with motion or light sensors, timers, or any other external controls.

If unsure if the electrical box is properly grounded, or the box is plastic and has no ground wire, or are unfamiliar with the methods of properly grounding fixture, consult a qualified electrician.

Important Safety

1. Do not look directly at LEDs for extended period of time.
2. Do not use in wet locations. **For INDOOR use only.**
3. Turn power off before servicing.
4. Do not leave bare wires exposed.
5. For electrical requirements, see fixture. Minimum 90 °C supply conductors.

Care and Maintenance

Periodically clean the fixture and diffuser using a mild, non-abrasive cleaner and soft cloth. When cleaning the fixture, make sure the power is turned off. Do not spray cleaner directly onto any part of the fixture of LEDs.

FCC Statement

This device complies with Part 15 of the FCC rules. Operation is subject to the following two conditions: (1) This device may not cause harmful interference, and (2) this device must accept any interference received, including interference that may cause undesired operation. Warning: Changes or modifications to this unit not expressly approved by the party responsible for compliance could void the user's authority to operate the equipment. NOTE: This equipment has been tested and found to comply with the limits for a Class B digital device, pursuant to Part 15 of the FCC Rules. These limits are designed to provide reasonable protection against harmful interference in a residential installation. This equipment generates, uses and can radiate radio frequency energy and, if not installed and used in accordance with the instructions, may cause harmful interference to radio communications. However, there is no guarantee that interference will not occur in a particular installation. If this equipment does cause harmful interference to radio or television reception, which can be determined by turning the equipment off and on, the user is encouraged to try to correct the interference by one or more of the following measures: Reorient or relocate the receiving antenna. Increase the separation between the equipment and receiver. Connect the equipment into an outlet on a circuit different from that to which the receiver is connected. Consult the dealer or an experienced radio/TV technician for help.

Patriot Lighting® Warranty

FIVE-YEAR LIMITED WARRANTY: If, during normal use, this PATRIOT LIGHTING® lighting fixture breaks or fails due to a defect in material and workmanship within five (5) years from the date of original purchase, simply bring this lighting fixture with the original sales receipt back to your nearest MENARDS® retail store. At its discretion, PATRIOT LIGHTING® agrees to have the product or any defective part(s) repaired or replaced with the same or similar PATRIOT LIGHTING® product or part free of charge, within the stated warranty period, when returned by the original purchaser with the original sales receipt. This warranty; (1) excludes expendable parts including but not limited to light bulbs; (2) does not cover damage that has resulted from abuse or misuse; and (3) does not cover any losses, labor, injuries to persons/property or costs. This warranty does give you specific legal rights and you may have other rights, which vary from state to state.

Troubleshooting Guide

Before doing any work on the fixture, shut off power supply at the circuit breaker panel to avoid electrical shock.

Problem	Cause	Solution
Fixture doesn't light	Power is off. Bad connection. Bad switch.	Check if power supply is on. Check cords and/or wiring. Test or replace switch.
Fuse blows or circuit breaker trips when light is turned on.	Discontinue use.	Call Customer Service Center 1-800-291-8838.

Replacement Parts List

Hardware Kit:
ZH-PL1125D17-NK7
Replacement Diffuser:
ZD-PL1125D17-OPL

SAVE THESE INSTRUCTIONS.