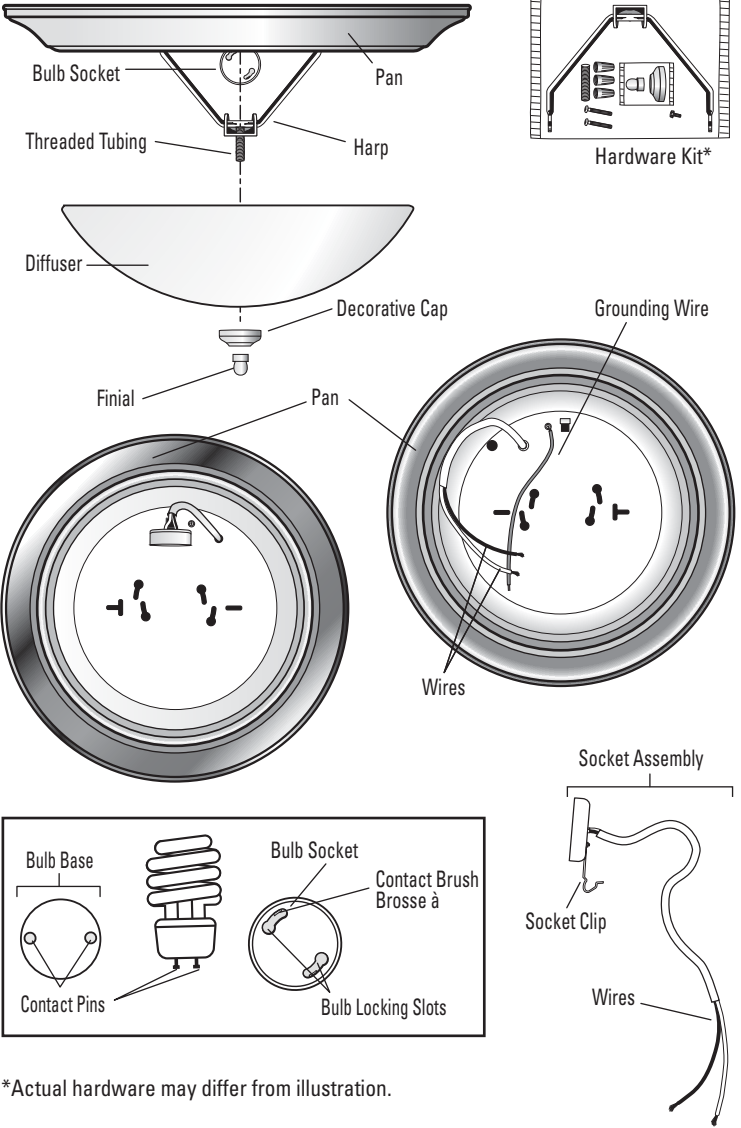


# 15 in. Flush Mount Fluorescent Ceiling Fixture

Model: G4130-BN-IBX, G4130-PB-IBX, G4130-WH-IBX

## To Begin

**WARNING:** Review important safety instructions before installation. Check to make sure you have the following:



\*Actual hardware may differ from illustration.

## Required

Installation Time: 45 Minutes

Flathead Screwdriver



Phillips Screwdriver



Wire Strippers



Soft Cloth



Wire Cutters



Pliers



Electrical Tape



Safety Glasses



Step Ladder

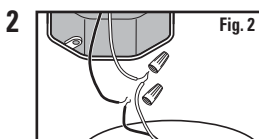


# Preparation

**DO NOT USE THIS FIXTURE WITH A DIMMING CIRCUIT.** If you presently have dimmer controls, you will need to remove them, and replace them with regular electrical switches. If you have a three way dimmer, you will have to replace it with a regular three way switch. **If you are unfamiliar with electrical installations, we recommend you have a qualified electrician do your installation.**

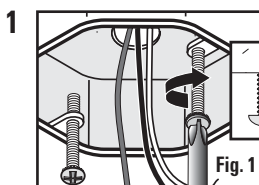


**1** **WARNING:** Shut off power at the circuit breaker or fuse panel before removing the old fixture (Fig. 1).

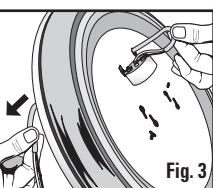
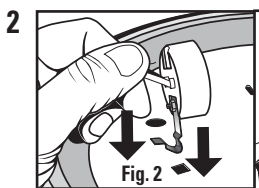


**2** Remove the old fixture. Make yourself a sketch of how the fixture is wired (index the sketch by wire color) or mark the wires themselves with masking tape and a pencil so you will know how to connect the wires to your new fixture (Fig. 2). If several wires are involved or if the wiring seems more complicated and perhaps even includes a red wire, take note of the connections before you disconnect them.

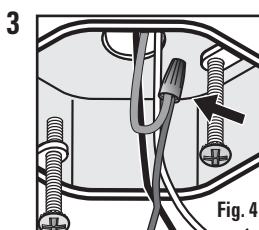
# Fixture Installation



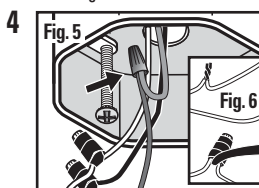
**1** This fixture does not use a mounting bracket to secure it to the electrical box. Instead, it is secured to the box by the included screws specifically designed to ground the pan to a metal electrical box. **For safe operation, use only the 1-1/2 electrical box screws included in the hardware kit included with the fixture.** Screw them into the electrical box until there is about 3/8 in. between the ceiling and the underside of the screw head (Fig. 1).



**2** To install the bulb socket, snap the metal socket clip into the rectangular hole until you feel it snap (Fig. 2). Feed the bulb socket wires through the circular wire hole, pull them through on the other side as much as you can without pulling it tight (Fig. 3).



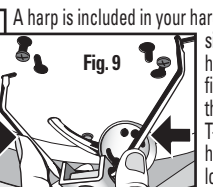
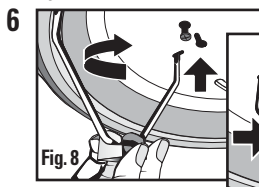
**3** **For safety and proper operation, your fixture must be properly grounded (Fig. 4).** If you are unfamiliar with the methods of properly grounding your fixture, consult a qualified electrician. A green or bare copper ground wire is pre-attached to your fixture pan. If your electrical box is plastic and has a green or bare copper grounding wire inside, the bare end of the fixture grounding wire must be secured to the green grounding wire inside your electrical box using the small wire nut (included). If your electrical box is metal and contains no ground wire as part of a grounded electrical system, see #5, as the metal chassis will be grounded via the electrical box mounting screws.



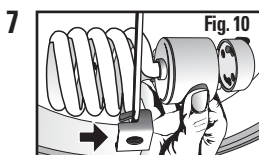
**4** Connect the supply leads from the electrical box to the fixture wire leads using the medium wire nuts supplied in your installation hardware kit as per the illustration (Fig. 5). The black lead from the fixture goes to the black supply lead, and the white lead from the fixture goes to the white supply lead. Secure the wire nuts properly to prevent the wires from coming loose. Tape the wire nuts to the wire using electrical tape. Carefully push the excess wires back inside the electrical box (Fig. 6).



**5** Locate the key hole slots on the pan. The inner two (2) are set at a distance that will accommodate a standard electrical box mount. Position the fixture pan over the electrical box so that the machine screws protruding from the electrical box pass through the elongated keyholes in the fixture's pan. Once both screws are through the keyholes, twist the pan, until both screws are up against the smaller end of the slot (Fig. 7). Hold in place and tighten the screws very tightly. The hardware kit includes two (2) screws specifically designed to ground the fixture to a metal electrical box. Tighten the screws until the underside of the screwhead is cutting through the paint on the fixture's surface and the pan is tight up against the ceiling surface. The underside of the screwhead is designed with a serrated edge, that when tightened against a painted surface will cut through to make contact with the metal underneath. In order for a ground to be made, the screws must be tightened to make a bare metal to bare metal contact.

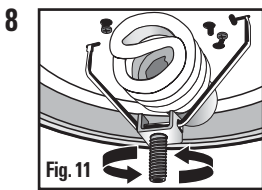


**6** A harp is included in your hardware kit. There are grooves on each side of the harp. Line up one side of the harp with the elongated oval in your fixture's pan and insert until it reaches the groove (Fig. 8). Turn so it faces the T-shaped slot, then squeeze until the harp fits into the slot (Fig. 9). Release to lock harp into place.

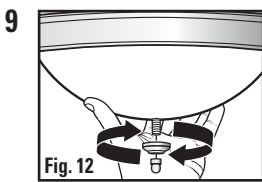


**7** Insert the proper GU24 base 27W compact fluorescent bulbs into their sockets (Fig. 10). (Depending on the store where you purchased your fixture, it may or may not include the bulb with it. If you need to purchase a bulb, you will need to purchase a **27 Watt CF27W/ self-ballasted GU24 base** compact fluorescent bulb.) Hold the bulb by its base, insert the pins into the 2 curved slots in the bulb socket and twist clockwise until the bulb "seats". The bulb can

only go into the socket one way. Do **NOT** force the bulbs. **CAUTION: DO NOT HOLD THE BULBS BY THE GLASS DURING INSERTION OR REMOVAL TO PREVENT ACCIDENTAL BREAKAGE! HOLD THE BULB BY THE PLASTIC BASE.**



8 Screw the included threaded tubing into the harp as shown in the illustration (Fig. 11).



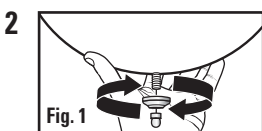
9 Place the diffuser over the center threaded tube, and while holding the diffuser in place with one hand, place the diffuser cap over the threaded stem, and secure both the diffuser cap, and diffuser with the threaded finial (Fig. 12).

10 Restore power to the electrical box to make sure your fixture is working properly.

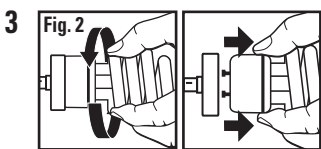
## Bulb Replacement Instructions

Your bulb should last up to 10,000 hours in normal use. When bulb replacement is necessary, you must replace the bulb with **27 Watt CF27W self-ballasted GU24 base fluorescent bulbs**. These bulbs are readily available at your local home center and most larger hardware stores.

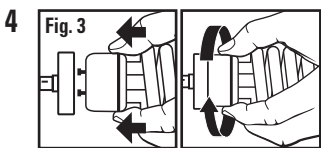
1 Shut off power supply. Allow sufficient time for bulbs to cool properly before handling.



2 While holding the diffuser in place, unscrew the finial, being careful not to drop the diffuser (Fig. 1). Remove the diffuser cap, and diffuser.



3 Remove the old bulb by grasping it firmly at the plastic base of the bulb and firmly twist the bulb counterclockwise until it "unseats" and lines up with the large end of the openings (Fig. 2). Pull straight out. Be careful not to drop the bulb.



4 Grasp the replacement bulb in the same manner. Insert the replacement bulb into the socket and twist the bulb clockwise until it 'seats' (Fig. 3). Do not force the bulb into the socket or twist forcefully.

5 Place the diffuser over the center threaded tube, and while holding the diffuser in place with one hand, place the diffuser cap over the threaded stem, and secure both the diffuser cap, and diffuser with the threaded finial.

6 Restore power to the fixture.

## Troubleshooting Guide

Minor problems often can be fixed without the help of an electrician. Before doing any work on the fixture, shut off power supply at the circuit breaker panel to avoid electrical shock.

Problem	Cause	Solution
Fixture doesn't light	Bulb is defective	Replace bulb
	Power is off	Check if power supply is on
	Bad wire connection	Check wiring
	Bad switch	Test or replace switch
Fuse blows or circuit breaker trips when light is turned on	Crossed wires or power wire is grounded out	Check wiring connections

## Cleaning Instructions

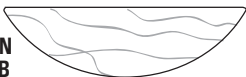
Your fixture is made from quality materials that will last for many, many years with minimum care. You may want to periodically clean the diffuser, or interior of the fixture using a mild, non-abrasive glass cleaner and soft cloth. Do **NOT** use solvents, or cleaners containing abrasive agents. When cleaning the inside of the fixture, make sure you have the power turned off, and do not spray liquid cleaner directly onto the bulb, socket, ballast, or wiring.

## Replacement Parts List

Keep this guide handy for ordering replacement parts.

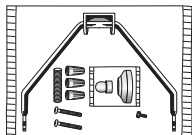
Diffuser

D4130BN  
D4130PB  
D4130WH



Hardware Kit

HDW4130BN  
HDW4130PB  
HDW4130WH



## Need Help?



In the event you are missing a part or have questions regarding installation please call the Customer Care Center 1-866-455-4798.

# Warranty

## 2 YEAR LIMITED WARRANTY

Good Earth Lighting, Inc. warrants this lighting fixture to be free from defects in materials and workmanship for a period of two (2) years from the date of original purchase by the consumer.

If you are missing any parts, or have any questions about your installation, **DO NOT RETURN YOUR FIXTURE TO THE STORE! CALL US FIRST!** We can often help get the problem corrected right over the phone. You can call us at 1-866-455-4798, 9AM-5PM CST, Monday through Friday.

In the unlikely event the Good Earth Lighting fixture fails to perform as it was designed to do within two (2) years from date of purchase, we will repair or replace (at our option) the unit in the original color, and style if available, or in a similar color and style if the original item has been discontinued, without charge. This warranty covers the entire fixture, **EXCLUSIVE OF LAMPS.** Suspect units should be properly checked to ensure performance problems are not lamp related. Defective units must be properly packed, and returned to Good Earth Lighting, Inc. with a letter of explanation, and your original purchase receipt showing date of purchase. **Call us at 1-866-455-4798** to obtain a Return Authorization number, and an address where to ship your defective product.

Note: No C.O.D. shipments will be accepted. The liability of Good Earth Lighting, Inc. is in any case limited to replacement of the defective light fixture product. Good Earth Lighting, Inc. will not be liable for any other loss, damage, or injury which is caused by the product. This limitation upon the liability of Good Earth Lighting, Inc. includes any loss, damage, or injury which is (I) to person or property or otherwise; (II) incidental or consequential in nature; (III) based upon theories of warranty, contract, negligence, strict liability, tort, or otherwise; or (IV) directly, or indirectly related to the sale, use, or repair of the product.

Good Earth Lighting, Inc., 5260 Capitol Drive, Wheeling, IL 60090

Printed in China



**Lamp contains Mercury. Dispose according to local, state, or Federal laws. See: [www.lamprecycle.org](http://www.lamprecycle.org)**

**MIN 90°C SUPPLY CONDUCTORS  
CONSULT A QUALIFIED ELECTRICIAN TO ENSURE CORRECT BRANCH  
CIRCUIT CONDUCTOR**

©2009 Good Earth Lighting, Inc.  
HDS4309INS4130

Patent Pending