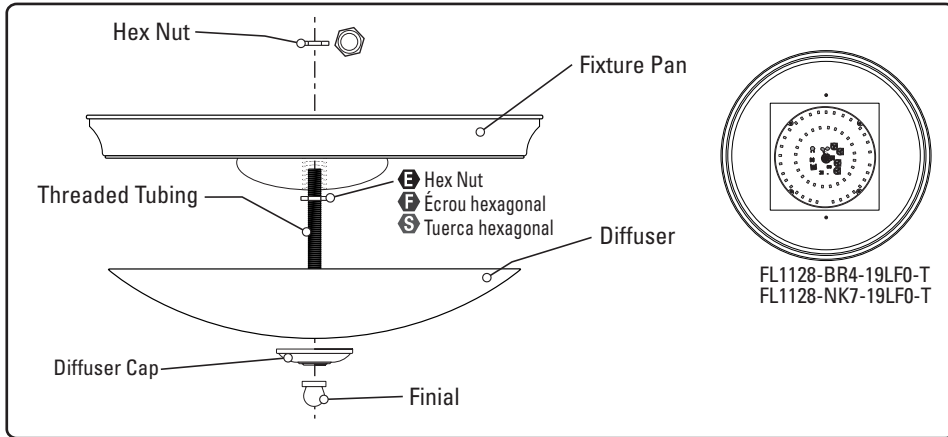


Patriot LIGHTING®

19in. Legend LED Decorative Ceiling Fixture Model #: FL1128-BR4-19LF0-T, FL1128-NK7-19LF0-T



Hardware kit*/				Required
AA x1	BB x2	DD x1	EE x1	
CC x2	FF x3			
GG x1	HH x1			

*Actual hardware may differ from illustration

Need Help?
Questions? Call our Customer Service Center 1-800-291-8838.



WARNINGS AND CAUTIONS

⚠️ TURN POWER OFF AT BREAKER BOX/FUSE BOX. TURN WALL SWITCH TO JUNCTION BOX OFF

Shut off power at the circuit breaker or fuse panel before removing the old fixture or installing a new one. Read entire installation procedure before you begin and save instructions for future reference.

THIS FIXTURE IS DIMMABLE BY SPECIFIC FORWARD PHASE ELECTRONIC (TRIAC) DIMMERS. Dimmers tested to be compatible with this fixture are the Lutron Skylark® SCL-153P*, Diva® DVCL-153P*, Maestro® MACL-153M*, Toggler® TGCL-153P*, Lumea® LECL-153P*, Caseta® PD-6WCL*, Eaton Halo® SAL06P*. (This list of dimmers does not imply any guarantee or warranty of compatibility with a particular application. Dimmers not listed do not imply non-compatibility.)

If unsure if the electrical box is properly grounded, or the box is plastic and has no ground wire, or are unfamiliar with the methods of properly grounding fixture, consult a qualified electrician.

IMPORTANT SAFETY INFORMATION

1. **TURN POWER OFF BEFORE SERVICING.**
2. Do not look directly at LEDs for any extended period of time.
3. Suitable for **INDOOR** damp locations.
4. Do not leave bare wires exposed.
5. For electrical requirements, see fixture. Minimum 90 °C supply conductors.

CARE AND MAINTENANCE

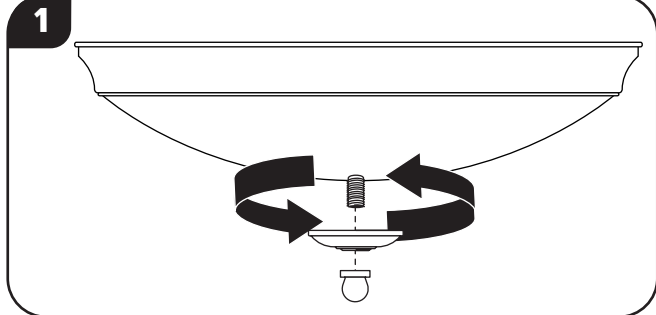
Periodically clean the fixture and diffuser using a mild, non-abrasive cleaner and soft cloth. When cleaning the fixture, make sure the power is turned off. Do not spray cleaner directly onto any part of the fixture or LEDs.

FCC Statement:

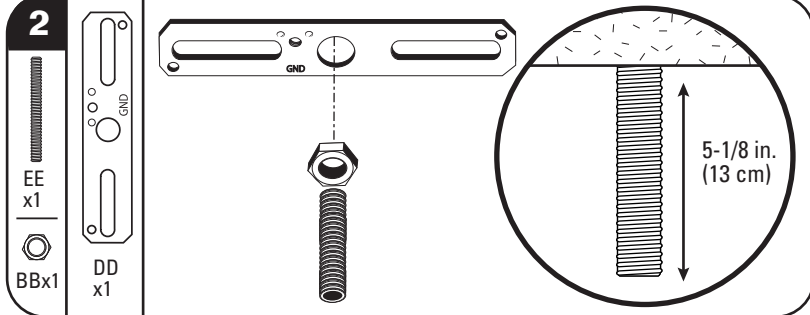
This device complies with Part 15 of the FCC rules. Operation is subject to the following two conditions: (1) This device may not cause harmful interference, and (2) this device must accept any interference received, including interference that may cause undesired operation. Warning: Changes or modifications to this unit not expressly approved by the party responsible for compliance could void the user's authority to operate the equipment. **Note:** This equipment has been tested and found to comply with the limits for a Class B digital device, pursuant to Part 15 of the FCC rules. These limits are designed to provide reasonable protection against harmful interference in a residential installation. This equipment generates, uses and can radiate radio frequency energy and, if not installed and used in accordance with the instructions, may cause harmful interference to radio communications. However, there is no guarantee that the interference will not occur in a particular installation. If this equipment does cause harmful interference to radio or television reception, which can be determined by turning the equipment off and on, the user is encouraged to try to correct the interference by one or more of the following measures: 1) Reorient or relocate the receiving antenna. 2) Increase the separation between the equipment and receiver. 3) Connect the equipment into an outlet on a circuit different from that of the receiver. 4) Consult the dealer or an experienced radio/TV technician for help.

Patriot Lighting® Warranty

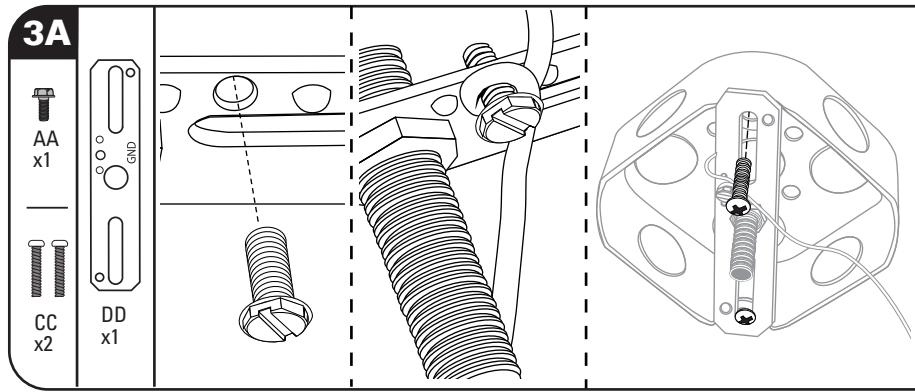
FIVE-YEAR LIMITED WARRANTY: If, during normal use, this PATRIOT LIGHTING® lighting fixture breaks or fails due to a defect in material and workmanship within five (5) years from the date of original purchase, simply bring this lighting fixture with the original sales receipt back to your nearest MENARDS® retail store. At its discretion, PATRIOT LIGHTING® agrees to have the product or any defective part(s) repaired or replaced with the same or similar PATRIOT LIGHTING® product or part free of charge, within the stated warranty period, when returned by the original purchaser with the original sales receipt. This warranty; (1) excludes expendable parts including but not limited to light bulbs; (2) does not cover damage that has resulted from abuse or misuse; and (3) does not cover any losses, labor, injuries to persons/property or costs. This warranty does give you specific legal rights and you may have other rights, which vary from state to state.



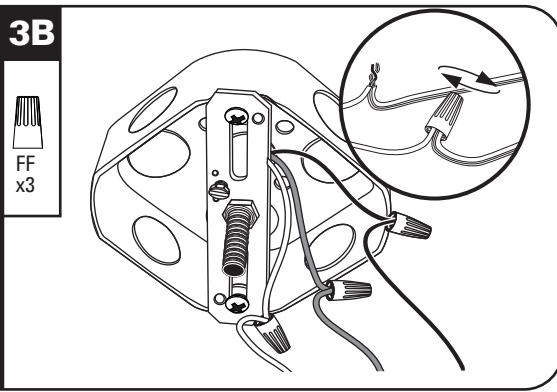
1 Remove the finial, diffuser cap, and diffuser and put aside for step 6.



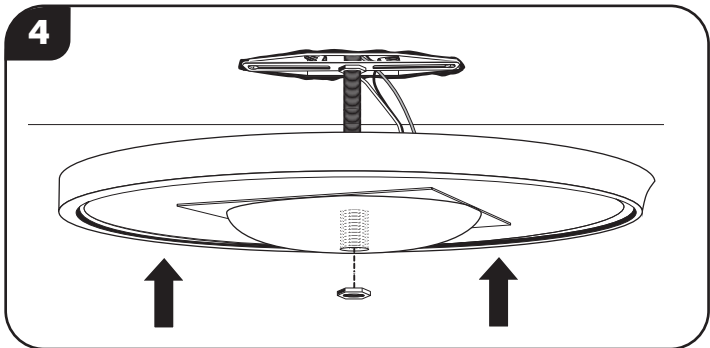
2 Attach the threaded tube (EE) to threaded hole in the center of the mounting bracket (DD). Lock the tube in place using the hex nut (BB). The threaded tube should extend below the ceiling line. 5-1/8in.(13 cm)



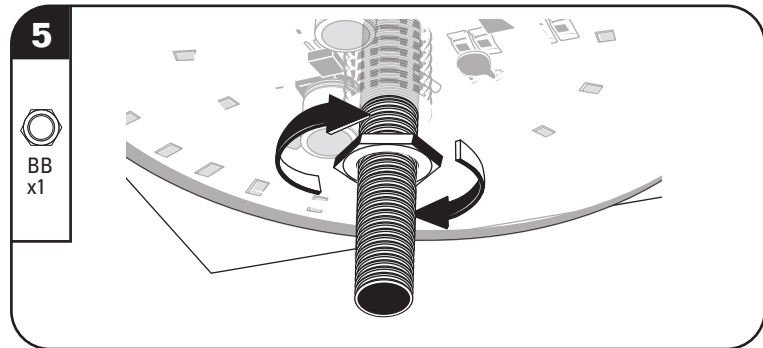
3A If the metal junction box is used as the grounding conduit, attach ground wire from back of fixture pan to the green ground screw (AA) and install it onto the mounting bracket (DD). Attach mounting bracket (DD) to the electrical box with the 2 included box screws (CC).



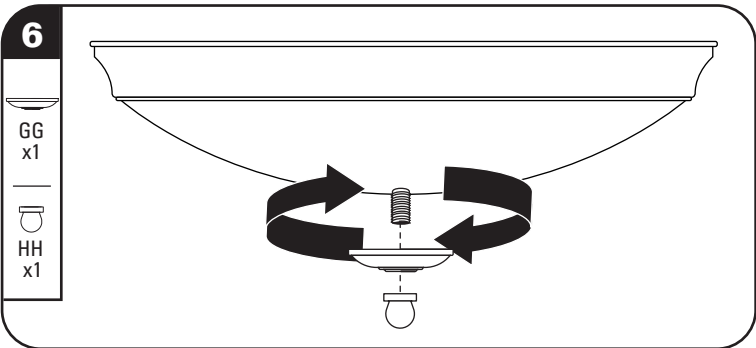
3B If the junction box has a ground wire, connect fixture ground wire (back of fixture pan) to ground wire in the electrical box using wire nut (FF). Ground wires are normally green or bare copper. Connect the black supply lead with the black fixture wire and the white supply lead with the white fixture wire using wire nuts (FF). All the wire connections need to be made on the back side of the pan. Push connections and excess wire into the electrical box.



4 Lift the fixture up to ceiling, carefully guiding the threaded tube mounted on the electrical box into the center hole of the fixture pan.



5 Secure the fixture to the electrical box by tightening down the hex nut (BB) on the threaded tube. **DO NOT** overtighten. Doing so could fracture the LED lens.



6 Place the diffuser over the threaded tube, and while holding the diffuser in place with one hand, place the diffuser cap (GG) over the threaded stem, and secure both the diffuser cap, and diffuser with the finial (HH). Restore power to the electrical box to make sure the fixture is working properly.

Troubleshooting Guide

Before doing any work on the fixture, shut off power supply at the circuit breaker panel to avoid electrical shock.

Problem	Cause	Solution
Fixture doesn't light.	Power is off. Bad connection. Bad switch.	Check if power supply is on. Check cords and/or wiring. Test or replace switch.
Fuse blows or circuit breaker trips when light is turned on.	Discontinue use.	Call customer service. (1-800-291-8838).

Replacement Parts List

Hardware Kit: ZH-FL1128D19-BR4
 Replacement diffuser: ZD-FL1128D19-OPL
 ZH-FL1128D19-NK7

SAVE THESE INSTRUCTIONS.