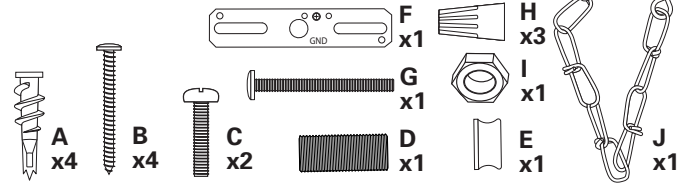
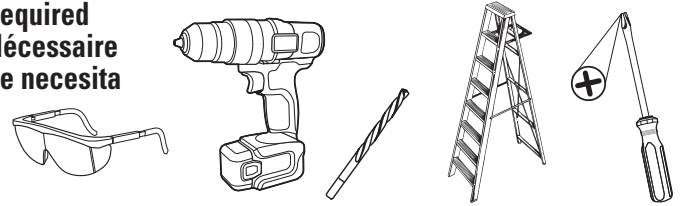


Hardware kit* / Kit de petit matériel de fixation* / Kit de herrajes *



*Actual hardware may differ from illustration
*Les éléments de fixation réels peuvent être différents de ceux de l'illustration.
**Puede que los herrajes reales difieran de los de la ilustración.

**Required
Nécessaire
Se necesita**



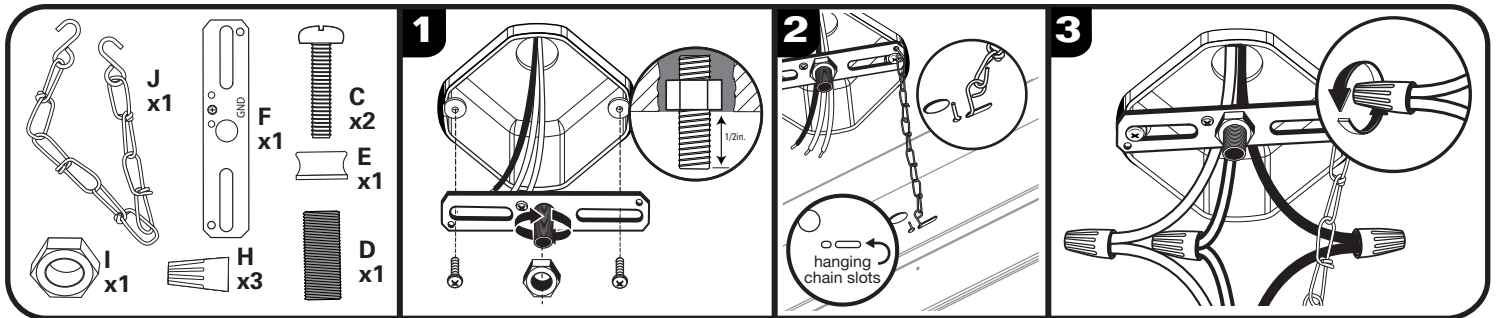
Read entire installation procedure before you begin and save instruction for future reference

ENGLISH

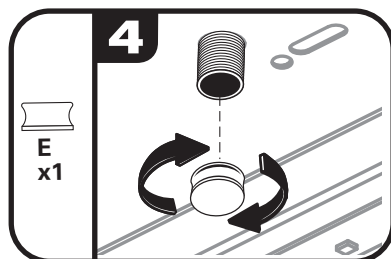
⚠ WARNINGS & CAUTIONS

1. AVOID ELECTRIC SHOCK, DISCONNECT POWER TO ELECTRICAL BOX BEFORE INSTALLING.
2. SUITABLE FOR DAMP LOCATIONS
3. Do not leave bare wires exposed.
4. Do not look directly at LEDs for extended period of time.
5. For electrical requirements, see fixture. Minimum 90° C supply conductors.
6. THIS FIXTURE IS DIMMABLE BY TRIAC DIMMERS AND IS NOT COMPATIBLE WITH 0-10V DIMMING SYSTEMS. Dimmers tested to be compatible with this fixture are the Lutron® Diva® C•L™: DVWCL-153PH, Lumea® C•L™: LGCL-153PLH, and Toggler® C•L™: TGCL-153PH. (This list of dimmers does not imply any guarantee or warranty of compatibility with a particular application. Dimmers not listed do not imply non-compatibility.)
7. If unsure if the electrical box is properly grounded, or the box is plastic and has no ground wire, or are unfamiliar with the methods of properly grounding fixture, consult a qualified electrician.

FCC STATEMENT: This device complies with Part 15 of the FCC rules. Operation is subject to the following two conditions: (1) This device may not cause harmful interference, and (2) this device must accept any interference received, including interference that may cause undesired operation. Warning: Changes or modifications to this unit not expressly approved by the party responsible for compliance could void the user's authority to operate the equipment. Note: This equipment has been tested and found to comply with the limits for a Class B digital device, pursuant to Part 15 of the FCC rules. These limits are designed to provide reasonable protection against harmful interference in a residential installation. This equipment generates, uses and can radiate radio frequency energy and, if not installed and used in accordance with the instructions, may cause harmful interference to radio communications. However, there is no guarantee that the interference will not occur in a particular installation. If this equipment does cause harmful interference to radio or television reception, which can be determined by turning the equipment off and on, the user is encouraged to try to correct the interference by one or more of the following measures: 1) Reorient or relocate the receiving antenna. 2) Increase the separation between the equipment and receiver. 3) Connect the equipment into an outlet on a circuit different from that of the receiver. 4) Consult the dealer or an experienced radio/TV technician for help.



- 1 Screw the threaded tube (D) into the threaded hole in the center of the mounting bracket (F). The threaded tube (D) must extend 1/2" below the ceiling line for the fixture pan to be attached. Attach the hex nut (I) and tighten it into place with a wrench to keep the threaded tube locked in place. Pull supply wires out of the electrical box. Using the included or existing box screws (C) to secure mounting bracket (F) to the electrical box.
- 2 Using the support chain (J), connect one end to back of fixture pan near center in specifically designed slots. Hook the other end to electrical box to temporarily hold fixture for wiring.
- 3 Connect fixture ground wire (back of fixture pan) to ground wire in the electrical box using wire nut (H). Ground wires are normally green or bare copper. Connect the black supply lead with the black fixture wire and the white supply lead with the white fixture wire using wire nuts (H). Push connections and excess wire into the electrical box.



4 Lift the fixture pan up and insert the threaded tube through the center hole of the fixture pan. Screw the cap (E) on and secure the fixture pan.

5A There are 4 holes located in the corners of the chanel down the center of the fixture pan. In order to support the fixture, 4 screws (B) must be installed. Drill 1/16" pilot holes in all 4 of these locations. If studs are encountered in all 4 holes, carefully fasten down the mounting screws (B) in each hole and skip down to **STEP 6**. If drywall is detected in any of the holes, proceed to the next step.

